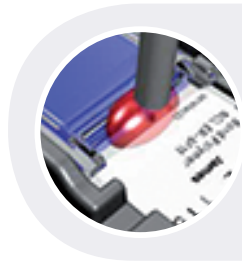
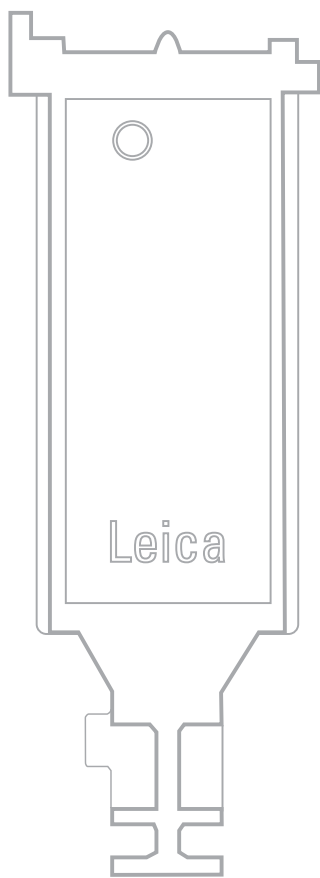


BOND UNIVERSAL COVERTILES TOTAL TISSUE CARE



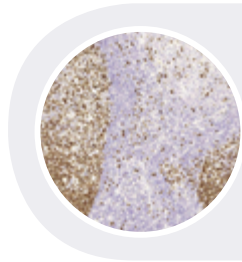
Gentle Reagent Application

- » Excellent tissue retention
- » Morphological preservation



Controlled Incubation Chamber

- » Tissue stays hydrated
- » Very low reagent volumes = Less waste



Diagnostic Clarity

- » Accurate temperature control
- » Complete and even reagent coverage



Easy-to-Use

- » Easy to clean
- » Keyed placement

**Unmatched
for Quality***

91% of BOND customers

find the stain quality and reproducibility to
be **better** than the competition.

* Source: Independent Survey.